

Importance of a Complete Count in Disaster Impacted Areas



Director Jared Moskowitz
Florida Complete Count Committee
January 28, 2020



Hurricane Michael

FLORIDA RECOVERY

AS OF JAN. 22, 2020

\$2 BILLION

In Federal Funds For Hurricane Michael



- More than \$462 million awarded by FDEM for Hurricane Michael
- Includes \$10 million in state cost-share
- 33 million cubic yards of debris in total
- 18 million cubic yards of debris in Bay County
- FDOT incurred a cost of at least \$435 million
- State granted 45 days at 100% Federal funding
- Received 90% Federal cost-share



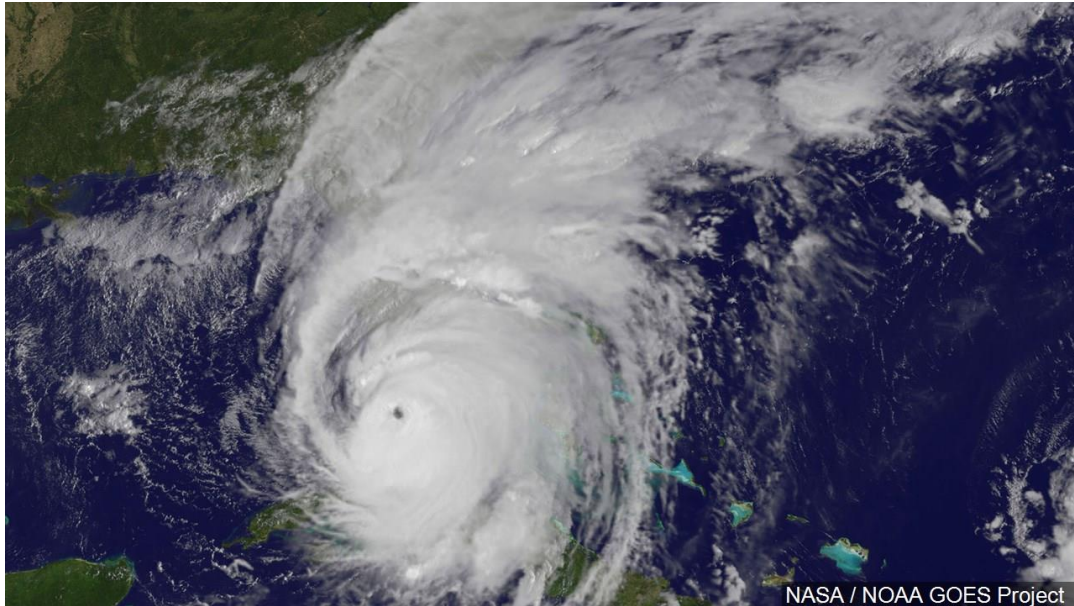
Hurricane Michael



- Displaced families may not receive mailed Census or may be counted in a different county.
- Difficult to determine exactly how many were displaced and continue to be displaced.
- 27,000 households received some form of FEMA Housing Assistance.
- More than 500 households are still using FEMA Travel Trailers or Mobile Homes.
- 11,000 military and family at Tyndall AFB pre-storm
- 14 Major Correctional Institutions
- Gulf Correctional Institution: 38% repopulated



Hurricane Irma and Monroe County



- 6.8 million evacuated statewide
- In Monroe County the biggest challenge for housing was finding affordable housing solutions
- More than 27,000 households relied on FEMA assistance to stay in hotels
- Case management focused on finding employment in nearby jurisdictions with affordable housing – i.e. Miami-Dade



Hurricane Katrina

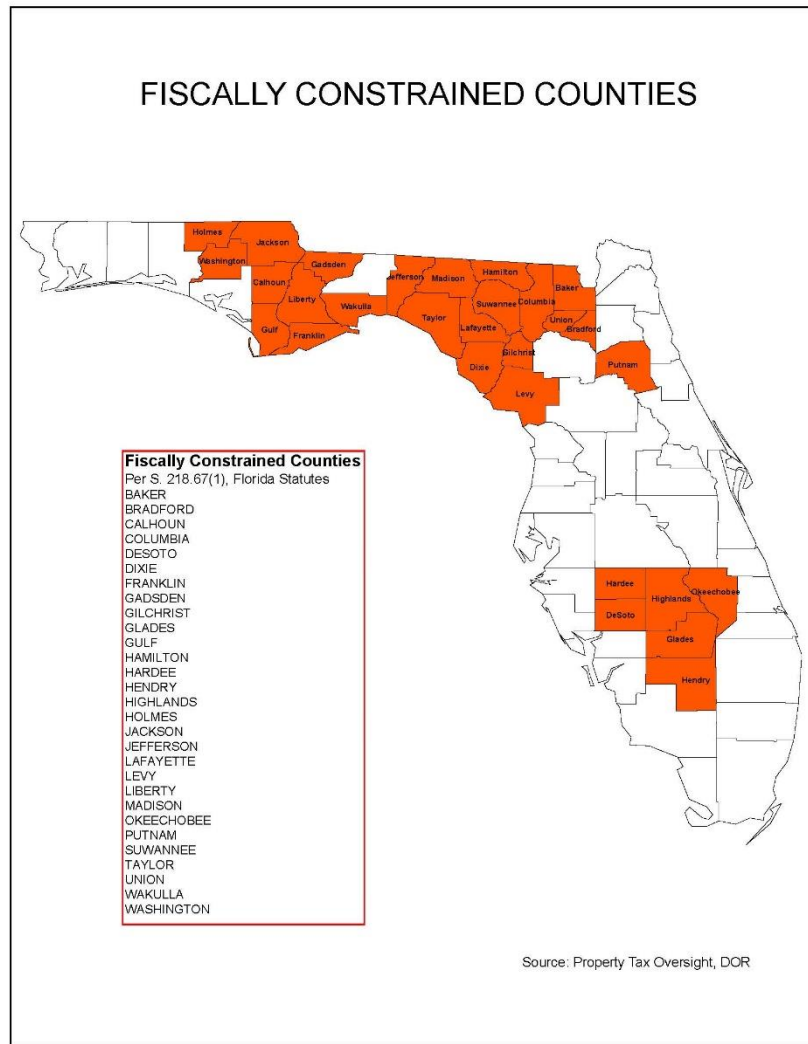
- 2010 Census found more than 140,000 fewer people (29%) in New Orleans 5 years post-Katrina:
 - 56,000 fewer children
 - The African-American population dropped by more than 100,000
- 29% of Bay County = 49,000 people
- Resilience in Survivors of Katrina (RISK) found some moved as far as California, Idaho and New York.
- Impacts linked to lack of affordable housing – also found in Bay County and Monroe County after Irma.

Hurricane Andrew

- Andrew impacted large county, allowing displaced to stay within the county
- Availability of private industry to boost housing
- US Army Corps of Engineers led the cleanup
- Local funding focused on rebuilding
- 8 years between Andrew and the 2000 Census



Fiscally Constrained



- Of counties impacted by Michael, only Bay and Leon are not fiscally constrained.
- Fiscally constrained cities exist within Bay County.
- Mexico Beach faced \$60 million debris bill with \$3 million budget.
- 29 Fiscally Constrained Counties statewide
- 14 of those approved for FEMA assistance from Hurricane Michael



Census Impacts

- 10 years of federal funding at stake
- FEMA Disaster Declaration thresholds
- Congressional and Florida Legislative Districts
- According to NOAA, 76.5% of Florida's Population lives in coastal areas – important that these areas receive appropriate funding to boost resiliency.



Supporting Impacted Areas

- More Census outreach in the Panhandle requested.
- Census can be administered by mail, phone or online. An increased presence across all options could reach displaced families.
- Maintain focus on preventing scams. Fact sheets, hotlines, etc.
- Request that temporarily relocated military personnel be counted toward Tyndall AFB.
- Increase Census outreach in Hurricane Irma impacted areas as well.
- Evaluate opportunities for a Special Census in disaster areas.
- Questions?

